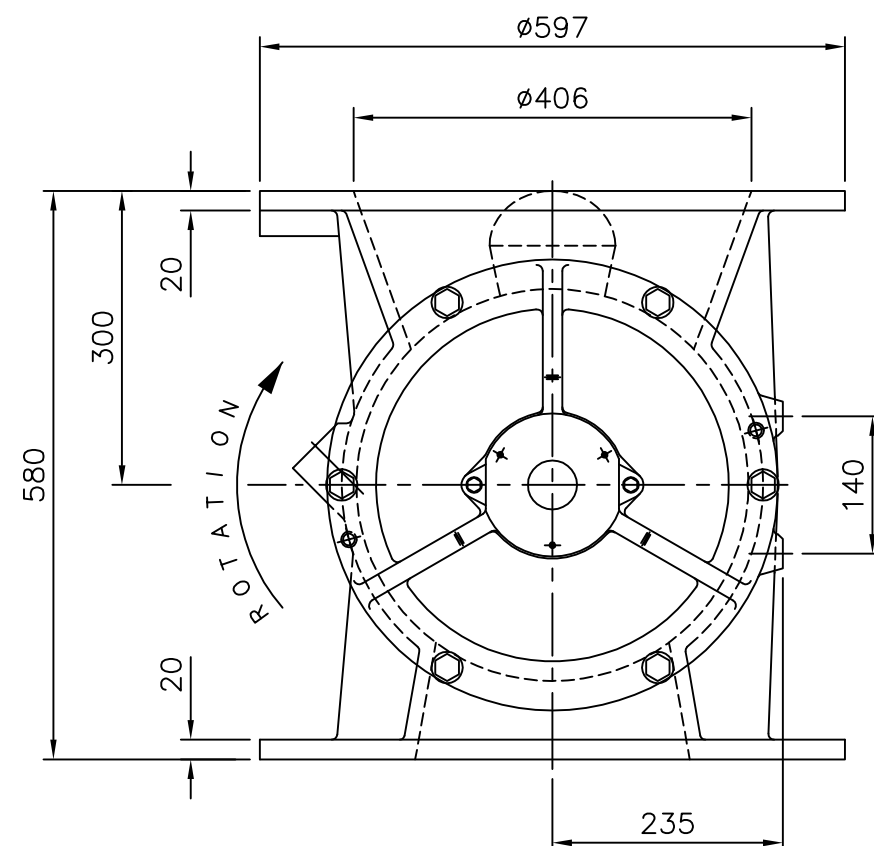


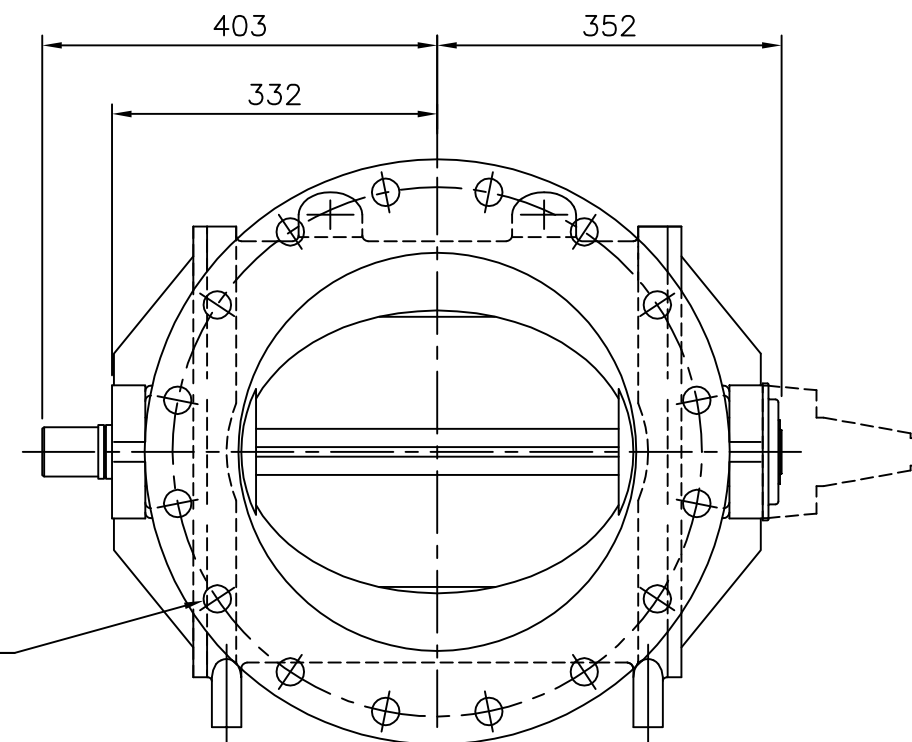
IF IN DOUBT ASK

OPTIONS

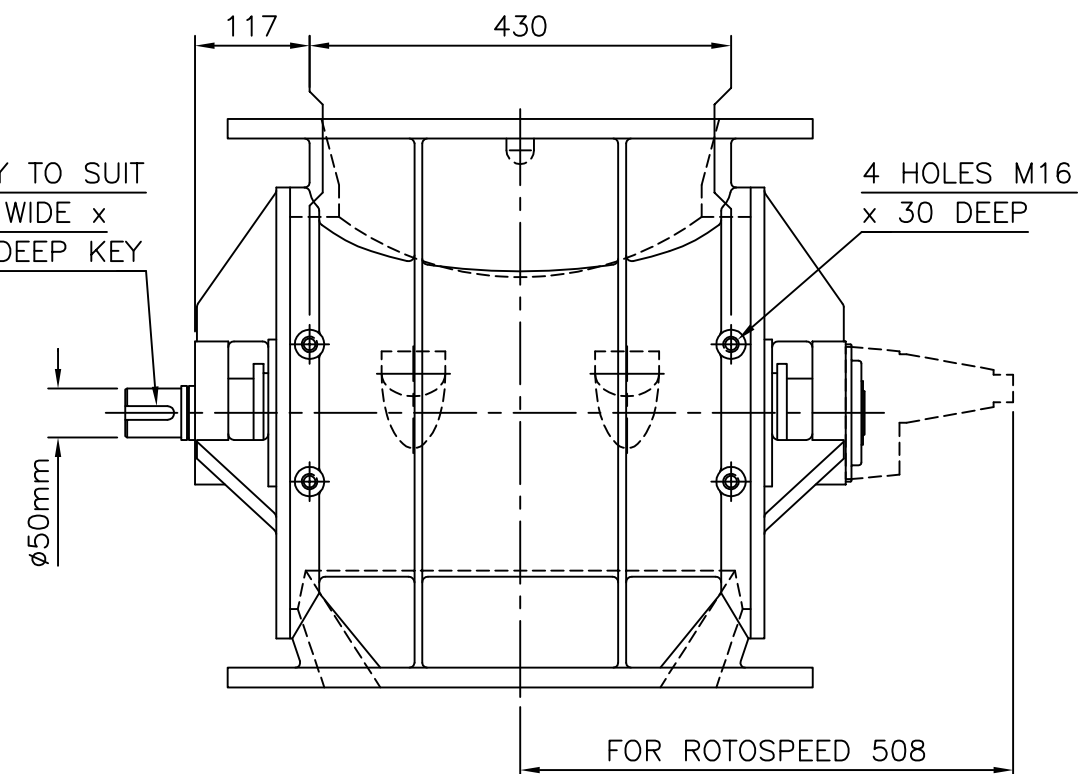
1. FOR EXPOSED INLET OR OUTLET
SAFETY GUARDS ARE REQUIRED.
2. 2 OFF 1" BSP (OR NPT) BODY VENT ON
NON-DRIVE SIDE.
3. 1/8" BSP (OR NPT) AIR PURGED
END COVER GLANDS.
4. ROTOSPEED SENSOR AS INDICATED.
5. INSPECTION DOOR ON NON-DRIVE SIDE
(NOT SHOWN) WITH 386 x 100mm APERTURE.



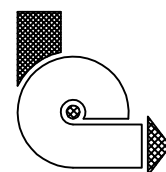
16 HOLES $\phi 28$ EQUI-
SPACED AS SHOWN ON
540 PCD (150lb ASA)
SAME BOTH FLANGES



KEYWAY TO SUIT
14mm WIDE x
9mm DEEP KEY



ITEM	PART No.	QTY	DESCRIPTION	MATL.	DWG REF
CLIENT			TITLE		
ASA STANDARD			BARESHAFT ARRANGEMENT 400mm ROUND ASA ROTARY VALVE		
SCALE			DRAWING No.		
N.T.S.			12615		
DRAWN	CHECKED	APPROVED	ISSUE		
C.B.G.			A B C		
18.6.1998					



ROTOLOK LTD

everything under control . . .

1 MILLENNIUM PLACE,
TIVERTON BUSINESS PARK,
TIVERTON, DEVON, EX16 6SB.
Tel: 01884 232232

This drawing is the property of ROTOLOK LTD
and is loaned subject to the condition that it
shall not be reproduced, copied, loaned or
submitted to others without our consent.

C 500 NOW 580 (17/03/2004 - M.D.J.)

B OPTIONS & ROTOSPEED ADDED (1442)

AMENDMENTS